

From court proceedings to care

Analysis of North Yorkshire County Council's CYPS data Applying Outcomes of Care proceedings for Children Study Method

Judith Masson UoB, Sean Jenny and Sharon Lawn, NYCC



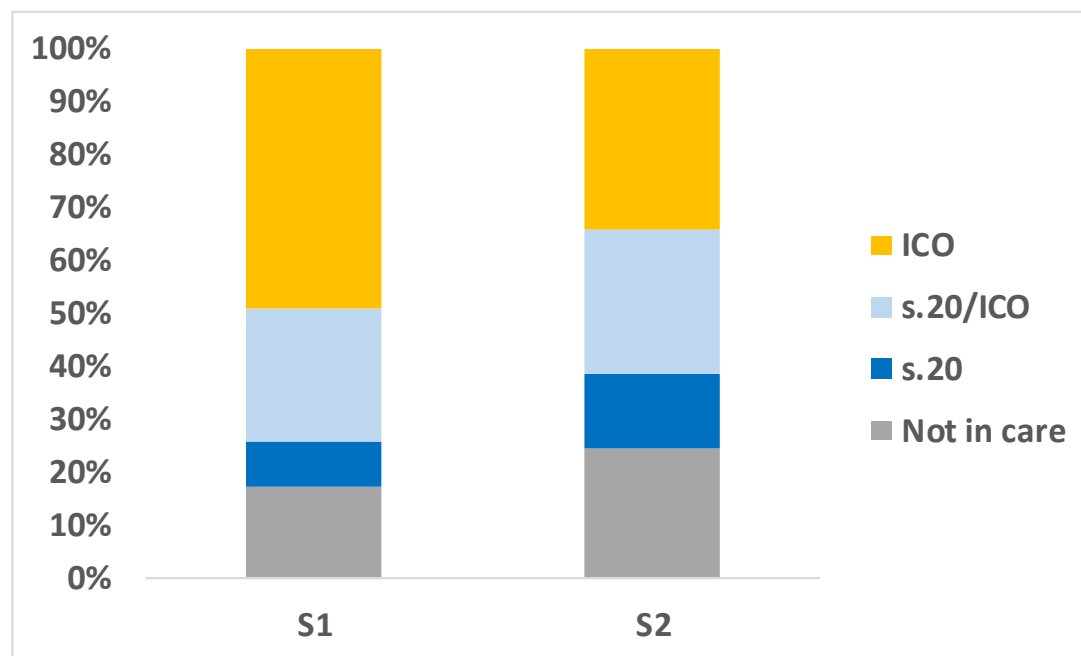
So much clearer with those goggles.....

Origin of the idea

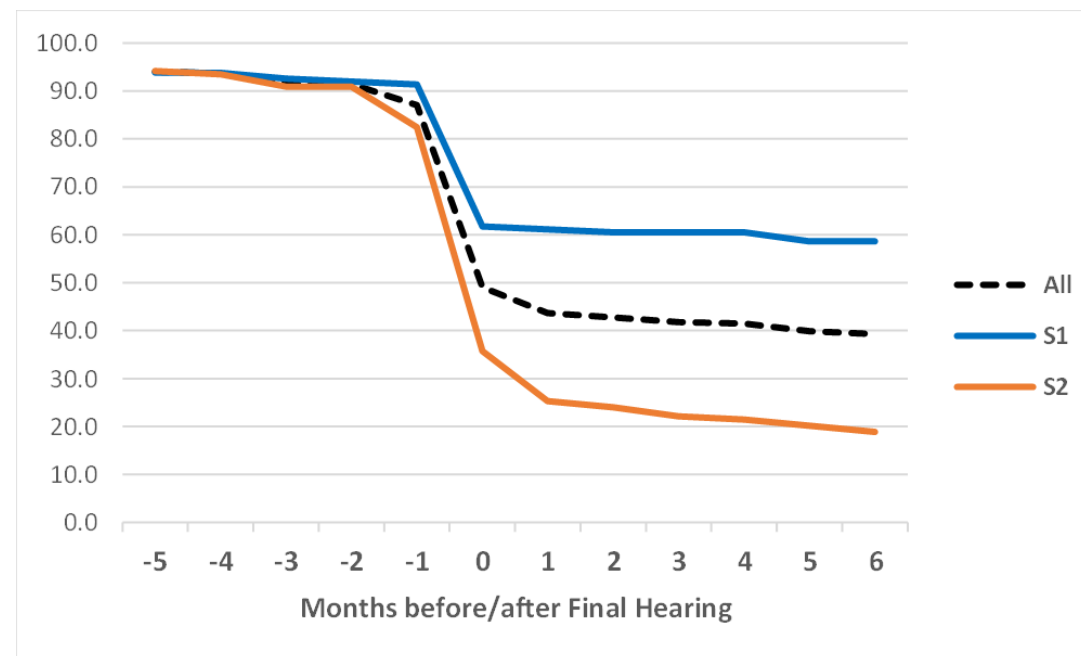
- **LAC data contains different populations of looked after children**
 - Sinclair (2007) identified early entrants, late entrants adolescent graduates
 - But no recognition of the impact of court proceedings
 - DfE analysis also obscures this by combining interim and full care orders
- **Outcomes of Care proceedings for children before and after cp reform Project**
 - Linked court and LAC data
 - To highlight the impact of care proceedings on care (and vice versa)
- **Cohort analysis**
 - Examined differences before and after PLO reforms
 - Cohorts identified by date of application
- **Lens (goggles) to see impact of court process on LAC (and CiN) data** (and vice versa)

Examples of analysis produced in the Study

Care during proceedings



Leaving care curve



From research project to practical application

- **Reducing complexity:**
- **identifying key variables in relationship between care and care proceedings**
 - Date of issue (start of care proceedings)
 - Date of completion (dismissal/ final order)
 - Order made
- **These can separate care and other services**
 - Before proceedings
 - During proceedings - (who goes home?)
 - After the end of proceedings - Patterns of care associated with proceedings
- **Applying the method within a LA**

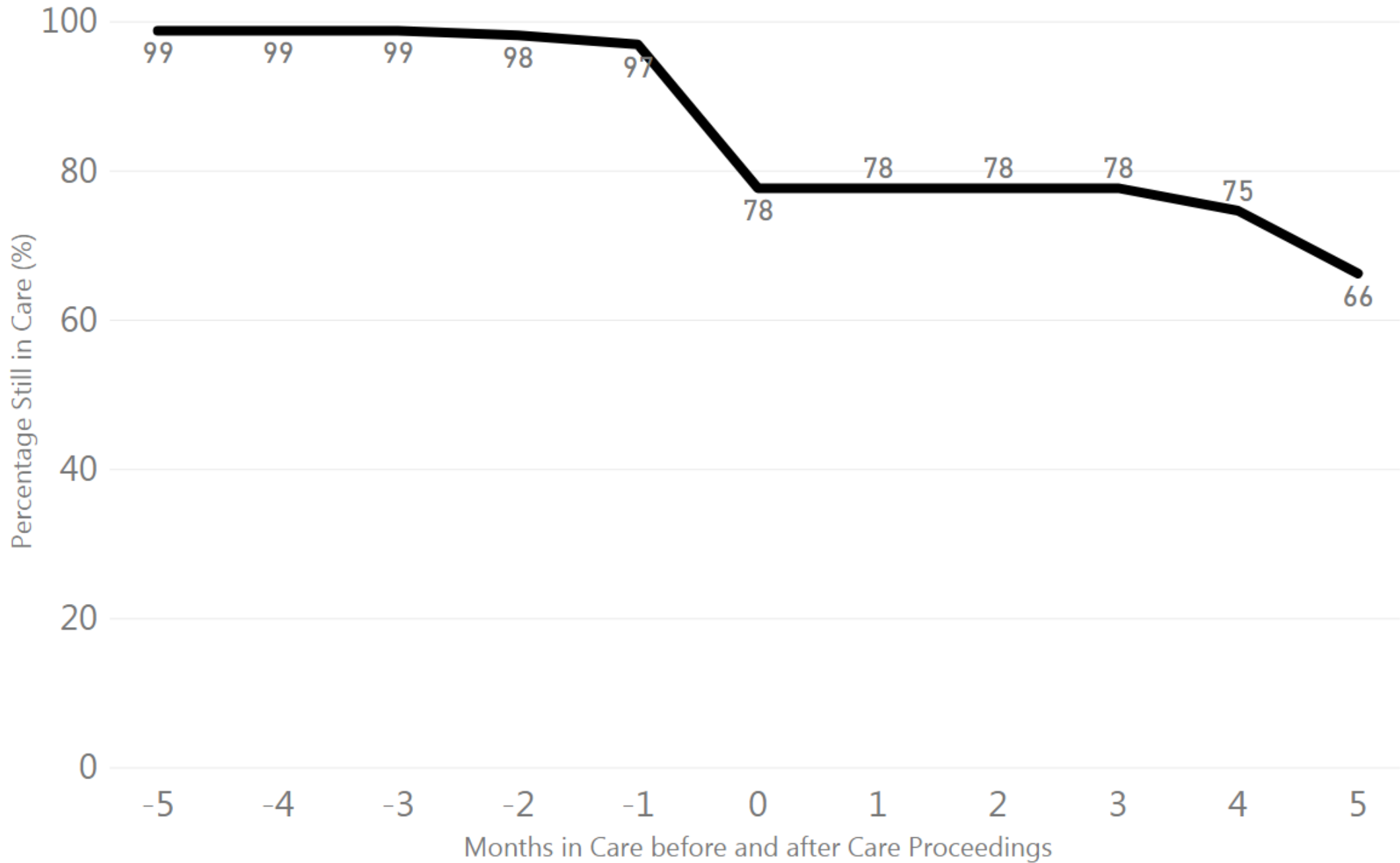
Project aims

- The aims of this project were:
- To join together the data from North Yorkshire County Council Children and Young People's Service (CYPS) to data from the legal department.
- To use this data to extend on previous work by Prof Masson on the amount of time a child spends in care and how this relates to care proceedings.
- To produce visualisations that represent how processes in the service can be captured with these data

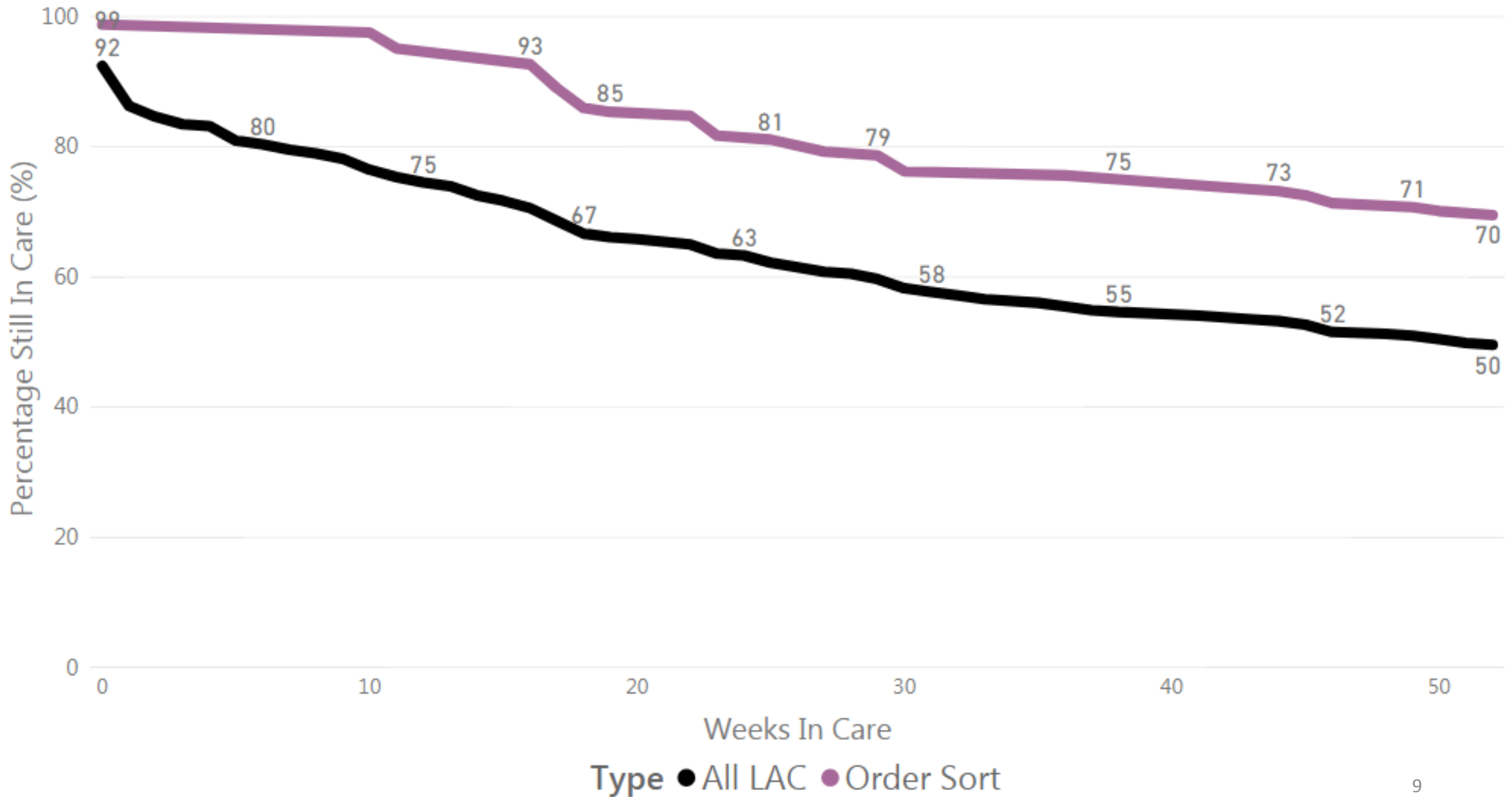
Data

- The legal department supplied a spreadsheet, from which we selected 268 individuals who were involved in proceedings from 2016 to 2018.
- This data was both automatically and manually joined to our CYPS database data, using surname, initial and date of order.
- There were a total of 26 individuals who we were not able to confidently match between the data sets.
- This project has highlighted potential issues with the discrepancy the data across the two services.

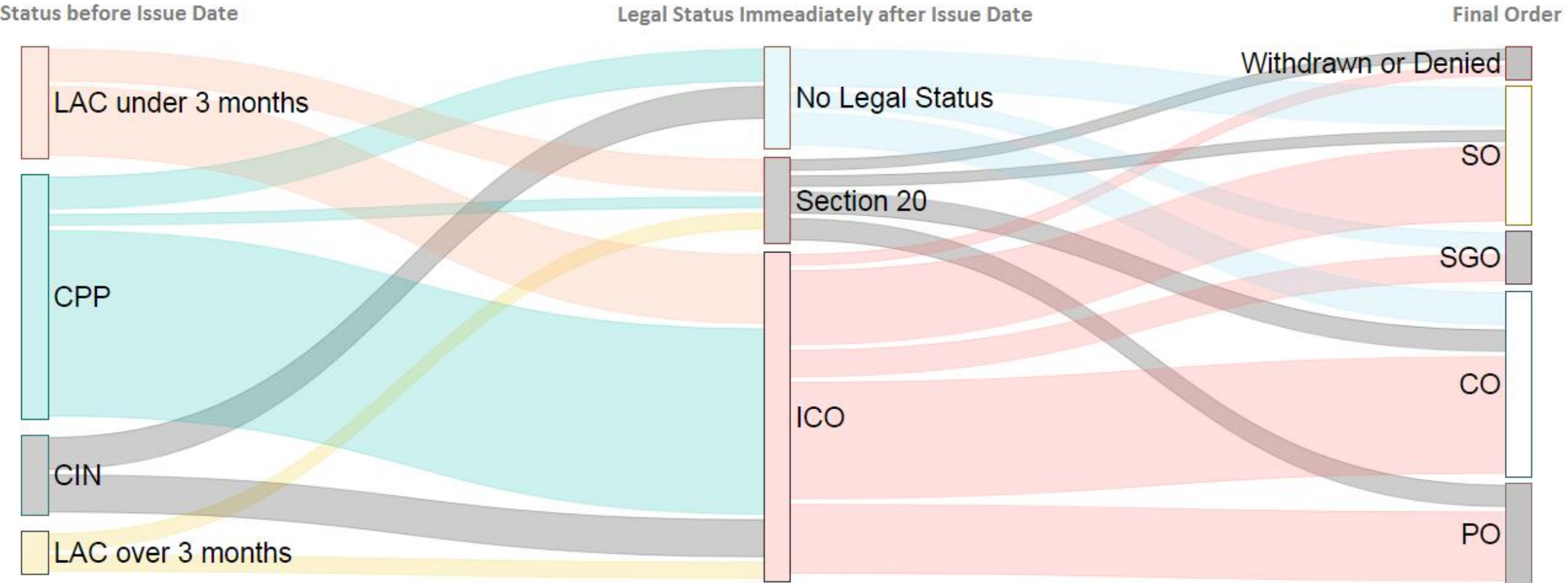
Leaving Care Curve 2016 to 2018



Leaving Care Curve NYCC (01/2016 - 11/2017)



Sankey Diagram of the Flow of Children through CYPS and Legal Proceedings NYCC 2016

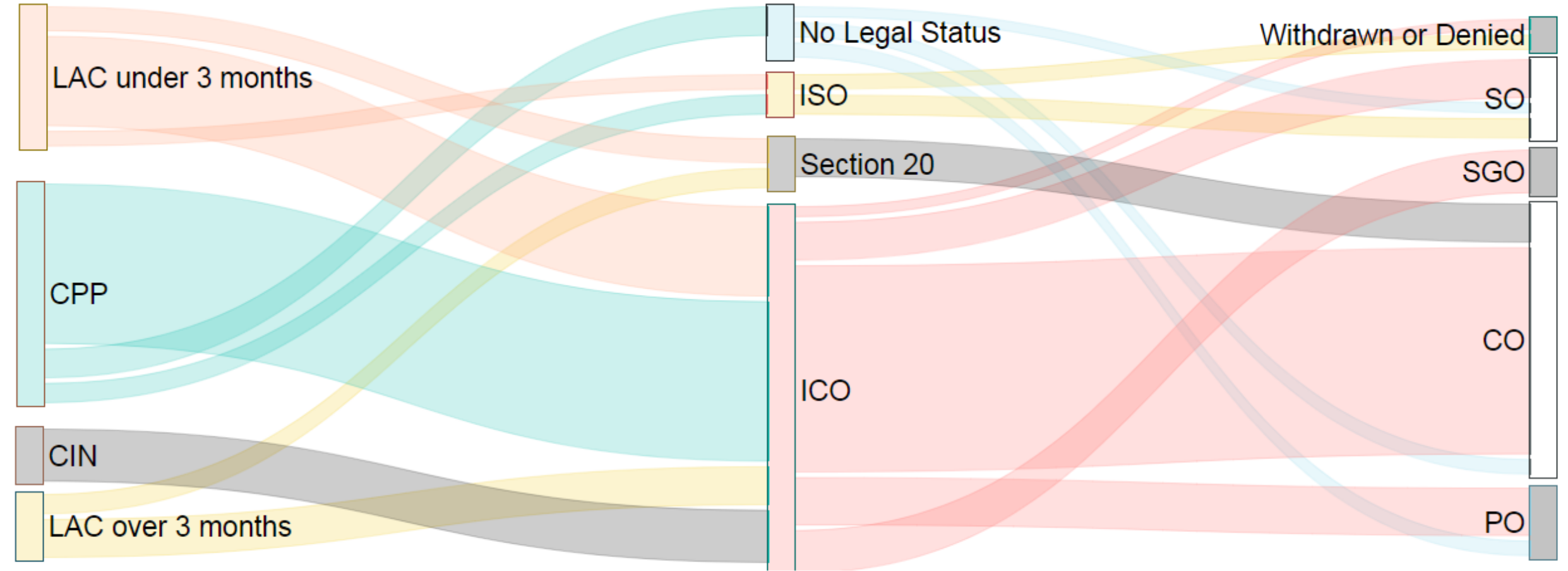


Sankey Diagram of the Flow of Children through CYPS and Legal Proceedings NYCC 2017

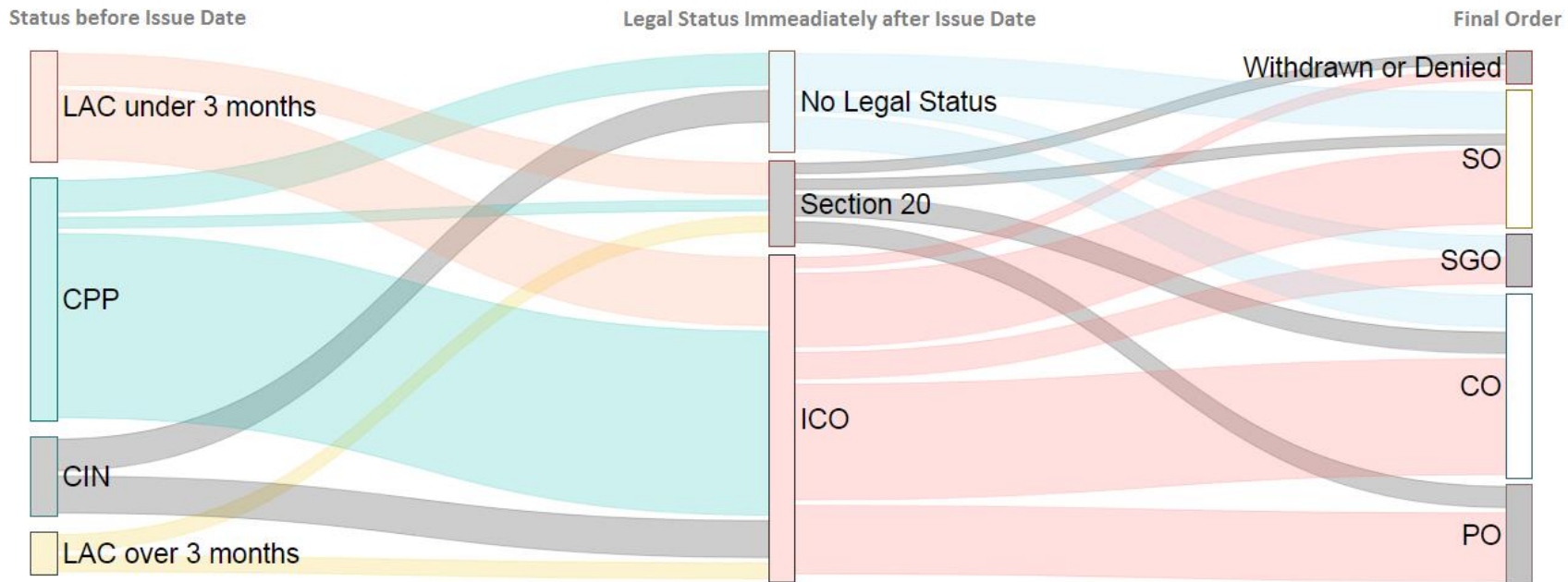
Status before Issue Date

Legal Status Immediatly after Issue Date

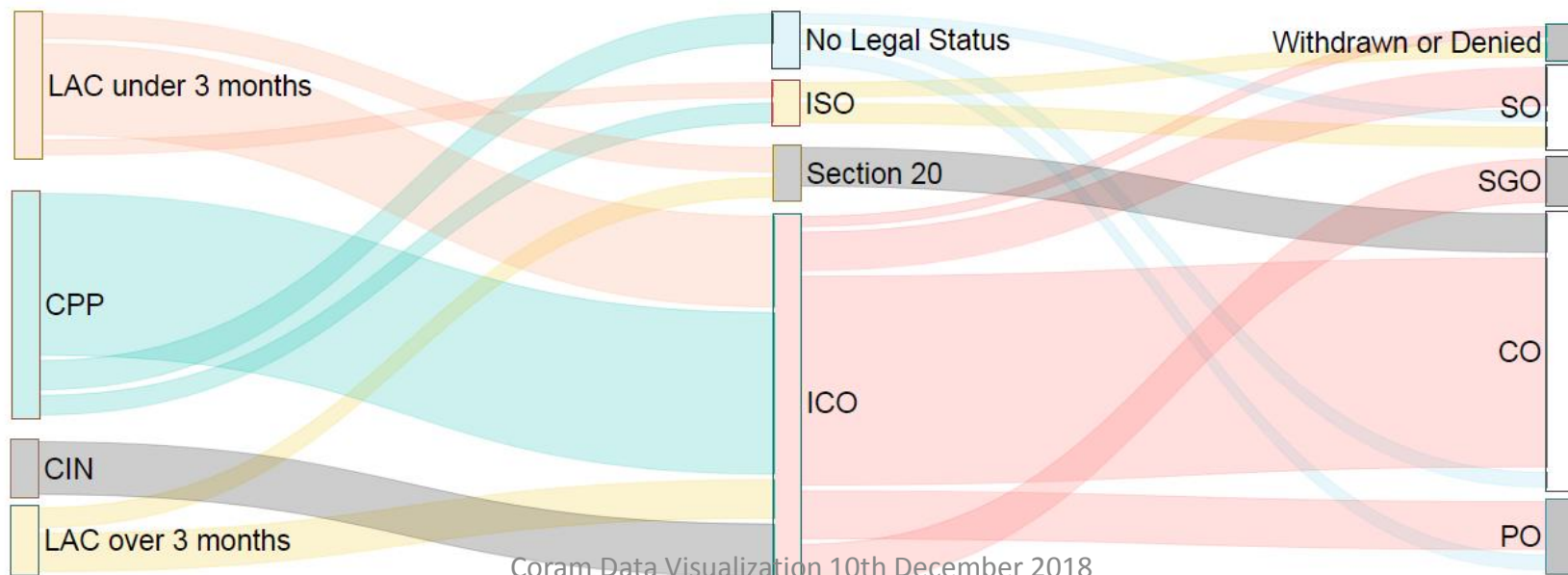
Final Order



2016



2017



Data Exclusion and Matching

- The Sankey diagrams show the main routes through the service.
- Low numbers were suppressed, so some unique journeys have been removed.
- These include:
 - FAO,
 - those who didn't have a status before the issue date (ie neither LAC nor CiN)
 - combining those with an SGO & SO into the SGO category
 - EPOs.

Conclusion to Data Matching

- It can provide great insight into the circumstances surrounding a child before the issue date
- Factors such as the previous interaction with the service (visits, contacts, other services involved) could be extensively used to predict the likely journeys a child could potentially take through the service
- Combining this with measuring how successful or disruptive this journey is to a child could assist future decision making with regards to taking children into care and planning legal proceedings

Going forward

- New legal workflows within the Iken system for Public Law Outline and Childcare Proceedings which will:
 - Reduce the need for manual work on spreadsheets
 - Increase data quality
 - Create the ability to track cases across systems more efficiently
 - Introduce regular meetings and sessions with the Legal Service to understand how to utilise the information being recorded
 - Generate the capability to produce performance indicators for the Legal Service
- This will assist with ensuring the plans for children and young people are agreed and acted upon with identified timescales

Further information

- If you would like any more information on this project conducted by NYCC or information on CYPs data, please contact either:
 - Sean Jenney (sean.jenney@northyorks.gov.uk)
 - Sharon Lawn (sharon.lawn@northyorks.gov.uk)
- On the **Outcomes of care proceedings for children Study**
 - 3 Free Downloadable research summaries



Reforming care proceedings 3: Insights from data linkage

Judith Masson, Lucienne Garside and Kay Bader
School of Law, University of Bristol

Jonathan Dickens and Julie Young
School of Social Work, University of East Anglia

Context

Current Department for Education analyses of Looked After and Children in Need data do not identify children subject to care proceedings. These proceedings result in decisions which have a profound effect on the lives of the children concerned but there is no systematic way of knowing what happens to children after the order is made. The Family Justice Review (2011) saw information about children's outcomes as a means for improving decision-making. It could give children's guardians and judges feedback on their recommendations and decisions, facilitating learning and the Review recommended exploring ways to do this. Information on court decisions can also support planning, decision-making and advice in local authorities by managers, social workers and lawyers.

About the Study

The study, conducted in 6 local authorities in England and Wales, examined the operation and impact of care proceedings reforms by comparing two random samples of care cases: S1, 2003-10 (Before Reform) 299 children; S2, 2014-15 (After Reform) 326 children - 616 children in total. Deterministic methods were used to link children's data from the proceedings to data on their care in the Looked After and Children in Need datasets. This gave a picture of children's care journeys before, during and after the proceedings, and their Care Outcomes 5 years (S1) and 1 year (S2) after the care proceedings had ended.

Available from:

<http://www.uea.ac.uk/centre-research-child-family/research-briefs>

judith.masson@Bristol.ac.uk